

# Choosing the right ISP matters.

Quantum Fiber® Connected Communities

Property: Livingston Lakes

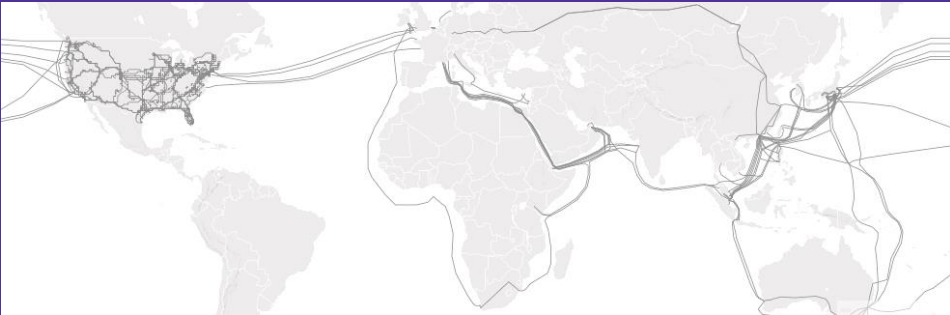


A Lumen Technologies Brand

# Lumen Technologies

Here's why we are a trusted, global Tier 1 leader with vast connections.

- We are a communications provider to global enterprise companies.
- We own and manage approximately 350,000 global route miles of fiber.



Source: Lumen Maps

Lumen Technologies a Tier 1 provider with a global fiber network

## Tier 1

**Tier 1 Internet Service Providers (ISPs)** have private connections through peering agreements which allow them to deliver the most-efficient data input and output across the fiber internet backbone.

- Customers deal with a single company from the consumer level
- Technology and resources are at a global scale
- At the forefront for cybersecurity detection and mitigation

## Tier 2 and 3

**Tier 2** providers have limited national or regional networks and purchase access to Tier 1 networks.

- Tier 2 examples: Comcast, Cox Communications, Metronet, Virgin Media

**Tier 3** carriers are usually last mile providers without a network, servicing the connection leading into a building or home.

Source: <https://www.techtarget.com/whatis/definition/ISP-Internet-service-provider>

Why **fiber internet** for multifamily communities is a **game-changer**.



How a Tier 1 ISP can put your property at the top of the class.

Service not available everywhere. Restrictions apply.

**Quantum**  
FIBER

[Read article](#)

# Proposal: Bulk 8-years

- Community contracts for 230 units
- 940M symmetrical bandwidth
- **\$26.95 per unit/month**
- 8-year term
- **No Annual Bulk Rate Increases**
- Data Gratis- 2
- Fiber to the Unit Solution
  - See Scope of Work for Details
  - Quantum Fiber 360 WiFi 7 Devices
    - <https://www.quantumfiber.com/support/services/360-wifi/welcome.html>
- XGSPON enabling up to 8G Speeds

# Proposal: Bulk 10-years


- Community contracts for 230 units
- 940M symmetrical bandwidth
- **\$26.95 per unit/month**
- \$300 per unit Door Fee
- 10-year term
- **No Annual Bulk Rate Increases**
- Data Gratis- 2
- Fiber to the Unit Solution
  - See Scope of Work for Details
  - Quantum Fiber 360 WiFi 7 Devices
    - <https://www.quantumfiber.com/support/services/360-wifi/welcome.html>
- XGSPON enabling up to 8G Speeds

# WiFi 7 delivers improved performance over WiFi 6.

- Backwards compatible with prior generations of WiFi equipment.
- One WiFi device covers most homes, dramatically reducing the need for mesh-pods.
- Can help preserve high resident satisfaction with a promising long lifespan to keep up with IoT, gaming, and computing needs.




[Learn more about WiFi 7 capabilities](#)



### Increased speed

- **8x** faster.
- Multi-Gig WiFi speed for **multiple users**.



### More coverage

- **2.4 Ghz, 5 Ghz, and 6 Ghz** frequencies.
- **90%** of homes will require **1** mesh device.



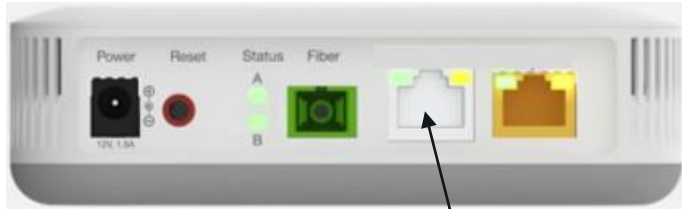
### Future ready

- Under **3** milliseconds in-home latency, a **7x** improvement.
- Run **100+** concurrent devices.

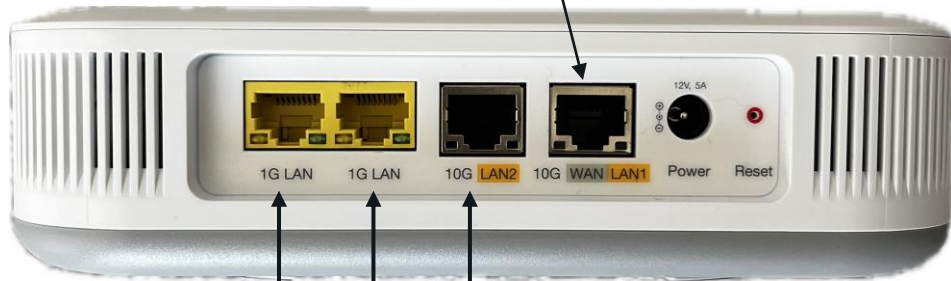


# WiFi 7 configuration

”



SmartNID to 1700 Ethernet feed



Ethernet distribution can connect to these ports, if not already used by SmartNID to feed Ethernet connections

1700 WiFi 7 Pod  
7.5”L x 2”W x 7.5”H



1700 Wall Mount Bracket  
Low Voltage Mounting Bracket

Smurf Tube (conduit)  
• 1700 PSU  
• Ethernet

Ethernet distribution (up to 3 connect to the 1700)

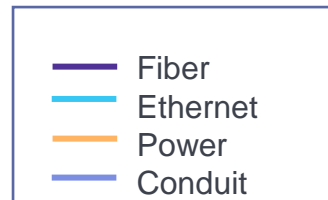
1700 WiFi 7 pod power

SmartNID to Pod feed

SmartNID  
5”L x 2”W x 7”H



14” Inside Width



Power outlet

# Game-changing internet with Instant 360 WiFi®

➤ Instant 360 WiFi is a new standard for safe and secure managed WiFi.

## Advanced security



Our network proactively detects threats to help protect residents' privacy and data from malicious attacks.

Built-in intelligent cybersecurity helps guard everyone on their WiFi.

## Customized control



The Quantum Fiber app gives residents control to create customized profiles, device access and scheduling, filter content, and more.

## Smart and seamless WiFi



The WiFi creates a blanket that keeps residents' devices connected at the best speeds possible and adapts to their devices' needs.

## Reliability day and night



\*Based on network uptime or availability.

Fast and reliable symmetrical speeds up to 940 Mbps or even up to 8 Gig—with unlimited data.

Limited availability. Service and speed in select locations only.

## Instant and easy



Instant—no waiting for equipment or need to install.

Easy—no annual contract, no credit check.



[Learn more about Instant 360 WiFi](#)

# Cybersecurity prevention layers

## Global and network levels of monitoring.

A vast **fiber network and infrastructure** backed by Lumen Technologies' global network.

**A broadband service** we fully manage.

**End-to-end technology** solutions we tailor to you and your residents.



Lumen's Global Network

Leverages Lumen Technologies' security to see threats, so **we have the ability to help stop attacks.**

**Helps prevent our customers** from interacting with known or newly discovered malicious activity.

**Automatically detects and blocks threats** by integrating highly confident threat intelligence into security solutions.



Black Lotus Labs<sup>®</sup>  
by Lumen

## Equipment and human layers of threat protection.

**Automatic system updates** to help protect against the latest security risks.

A 128-bit encrypted connection and **advanced security features** provide built-in cybersecurity to guard IoT and smart-devices using WiFi.

Advanced visibility, which allows us to help **identify and remedy issues autonomously** by providing digital diagnostics and support with data.



Instant 360 WiFi<sup>SM</sup>  
equipment built-in  
protections

**Warning notifications** when accessing suspicious webpages.

**Parental controls**, device, and activity monitoring.

Educational resources like our **Quantum Fiber blog**.



Informed residents  
and staff



Learn more: [Q.com/connectedcommunities](https://q.com/connectedcommunities)

Resource Center: [Q.com/multifamily-resources](https://q.com/multifamily-resources)

WiFi 7: [Learn more about WiFi 7 capabilities](#)



Although our fiber service usually means 100% fiber-optic network to your location, in limited circumstances Quantum Fiber may need to deploy alternative technologies coupled with a non-fiber connection from a certain point (usually the curb) to your location in order to provide the advertised download speeds. Customer speed experiences will vary, particularly when accessing the Internet wirelessly from various devices. Download/upload speeds are via a wired connection. Internet speeds are not guaranteed due to conditions outside of network control, including customer location, devices, equipment, and access through a wired or wireless connection; see [q.com/legal](https://q.com/legal) for more information. Limited availability. Service and speed in select locations only. Quantum Fiber may change, cancel, or substitute offers and services, or vary them by service area, at its sole discretion without notice. Additional restrictions may apply. ©2024 Q Fiber, LLC. All Rights Reserved. Quantum, Quantum Fiber and Quantum Fiber Internet are trademarks of Quantum Wireless LLC and used under license to Q Fiber, LLC.