



9696 Bonita Beach Road SE, Suite 210
 Bonita Springs, FL 34135
 Ph: (239) 444-1440

Alysia Testa
 Livingston Lakes Condominium
 Association, Inc.
 15090 Palmer Lake Circle
 Naples, FL 34109

DAY OF WEEK DATE	Monday April 7th, 2025	PROJECT #	25RN-0060
PROJECT	Livingston Lakes - Painting		
LOCATION	15090 Palmer Lake Circle, Naples, FL 34109		
CONTRACTOR	A.M. Prestige Painting, Inc.	OWNER	Livingston Lakes Condominium Association, Inc.
WEATHER	Sunny	Temp	87°
		Time	9:00 am
PRESENT AT SITE	A.M. Prestige Crew (AMP)		
	Anthony DiNardo – Karins Engineering (KE)		

PERMIT:

Garden Homes Stucco Inspection

Page 1 of 9

The purpose of this site visit was to inspect the areas of delaminated stucco that was initially marked by the contractor on the lake side of the Garden Homes. Areas modified by the engineer were marked on site with red crayon. The following was noted:

Building 15098

- Proceed as noted by contractor on slab edges of stacks 2, 3, 4
- Proceed as modified by engineer on stacks 5.



Stack 2 and 3



Stack 4



Stack 5

Building 15102

- Proceed as modified by engineer on stacks 4
- Flaking paint marked by contractor does not require stucco removal



Stack 4



Building 15106

- No stucco removal required where contractor marked on stack 3, 4
- Proceed as modified by engineer on stacks 5



Stack 3



Stack 4



Stack 5



Building 15110

- Proceed as modified by engineer on stacks 5



Stack 5



Building 15114

- Proceed as noted by contractor on slab edges of stacks 3, 4
- Proceed as modified by engineer on stacks 5



Stack 3



Stack 4



Stack 5



Building 15118

- flaking paint marked by contractor does not require stucco removal on stack 1.
- Proceed as noted by contractor on slab edges of stacks 3, 4



Stack 1



Stack 3



Stack 4



Building 15122

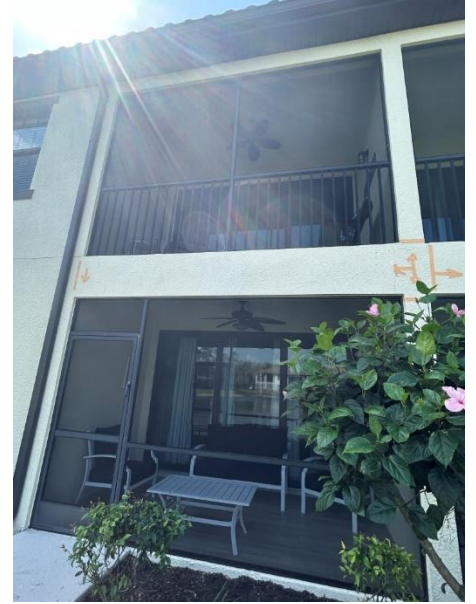
- Proceed as noted by contractor on slab edges of stacks 1, 2
- Proceed as modified by engineer on stacks 3, 4, 5



Stack 1



Stack 2



Stack 3



Stack 4



Stack 5



Building 15126

- Proceed as noted by contractor on column of stacks 4/5



Column 4/5



Building 15130

- Proceed as noted by contractor on slab edges of stacks 1, 2, 4, 5



Stack 1



Stack 2



Stack 4

